

GHG EMISSION REPORT

Efficient Plastech

Reporting Period

Year 2022

Year 2023

Year 2024

Year 2025



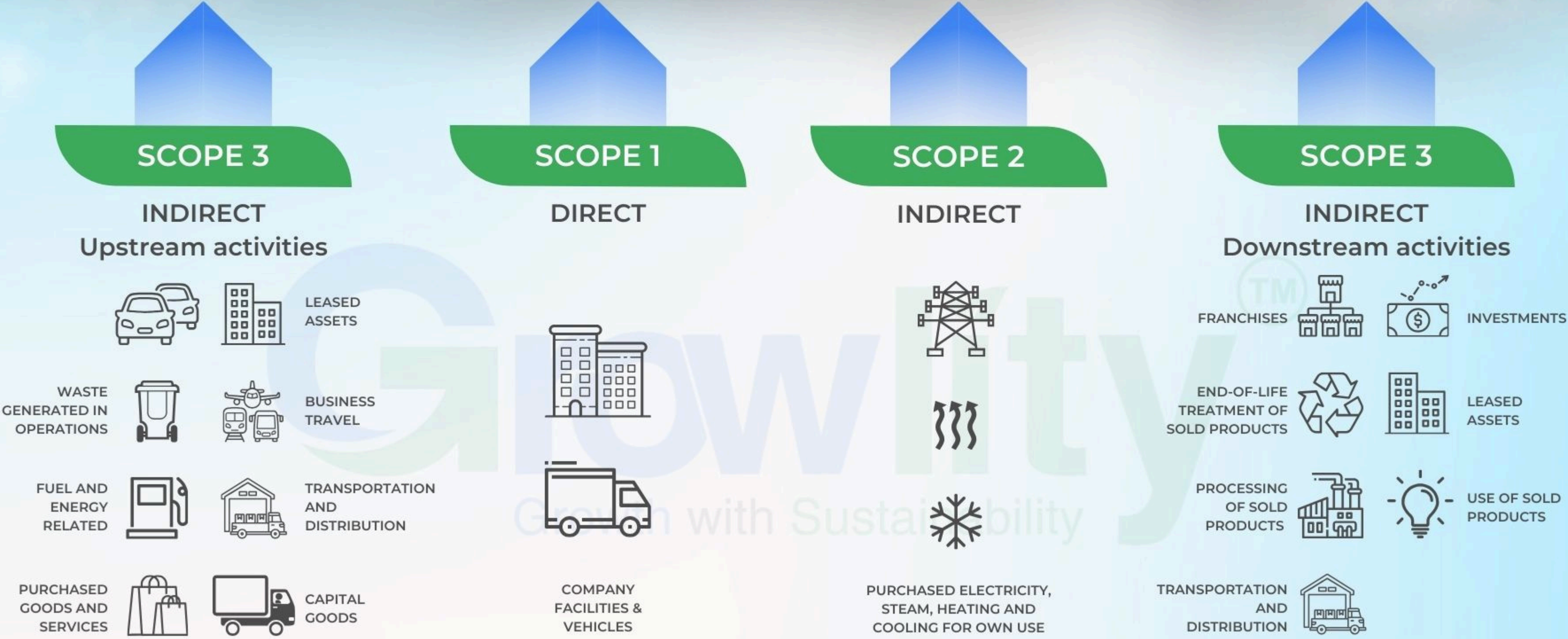


Introduction of GHG Emissions in Accordance with ISO 14064 and the GHG Protocol



GHG

PFCS CO₂ N₂O HFCS CH₄ SF₆



Reference used for study: ISO 14064 & Green House Gas Protocol

Locations Covered

Sr. No.	Address
1.	Plot number 49, HDIL Industrial Park, Virar Ahmedabad Highway Road, Chandansar, Virar East, Daluka - Vasai, District - Palghar, State - Maharashtra - 401305
2.	Plot number 64, Sector 8A, Sidcul, District - Haridwar, State - Uttarakhand
3.	City Survey no. NA. 1615/A, Costal Highway, Village - Daheri Umbergaon, Taluka - Umbergaon, District - Valsad, State - Gujrat

ISO 14064 and the GHG Protocol



Developing Accurate GHG Inventories

We regularly track and record greenhouse gas emissions across all aspects of our operations, ensuring that our documentation covers all relevant sources for accurate and comprehensive reporting.



Implementing Emission Reduction Strategies

We identify and implement strategies to reduce greenhouse gas emissions while continuously monitoring and improving our processes to minimize our GHG footprint.



Transparent Reporting

We prepare comprehensive reports on our greenhouse gas emissions and reduction initiatives in compliance with ISO 14064 and GHG Protocol standards.



Third-Party Verification

We employ independent third-party experts to review and verify our greenhouse gas data, reflecting our dedication to accuracy, transparency, and accountability.

About GHG Emission



SCOPE 1

DIRECT GHG EMISSION

Emissions from organization-owned sources and on-site combustion are crucial for evaluating and reducing the entity's GHG footprint for the period.



SCOPE 2

INDIRECT GHG EMISSION

Indirect emissions from purchased energy are essential for evaluating and reducing an organization's environmental impact for the given period.



SCOPE 3

OTHER INDIRECT GHG EMISSION

Indirect emissions from the entire value chain, encompassing suppliers, customers, influencing sustainability impact during period.

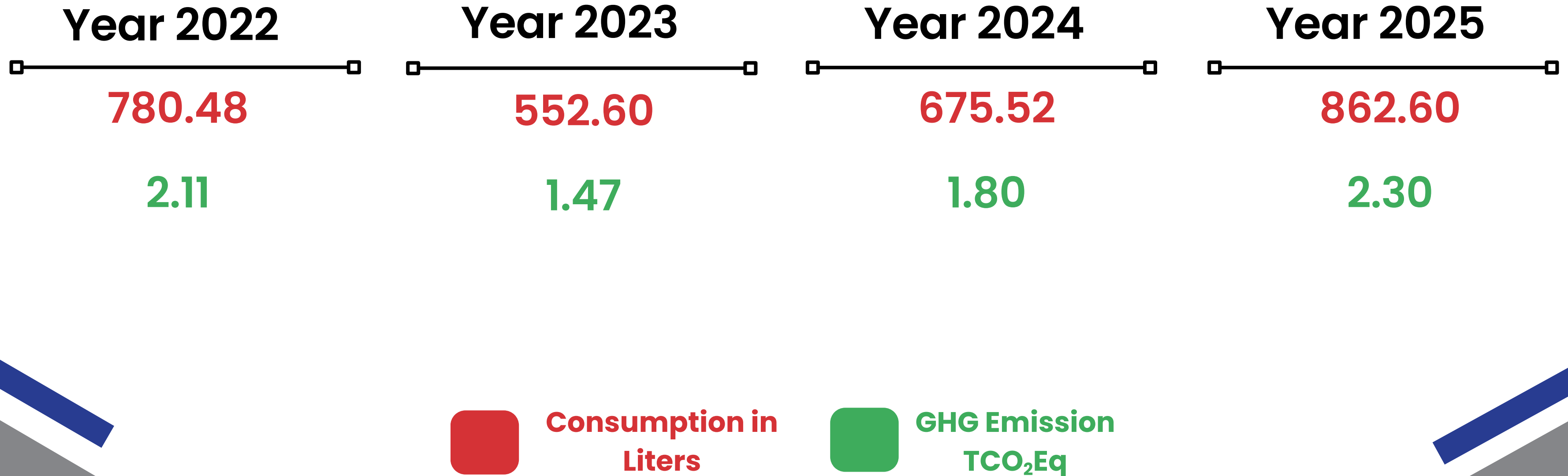
Scope 1

Direct GHG Emissions



Stationary Combustion

Consumption of Liquid fuels – Diesel

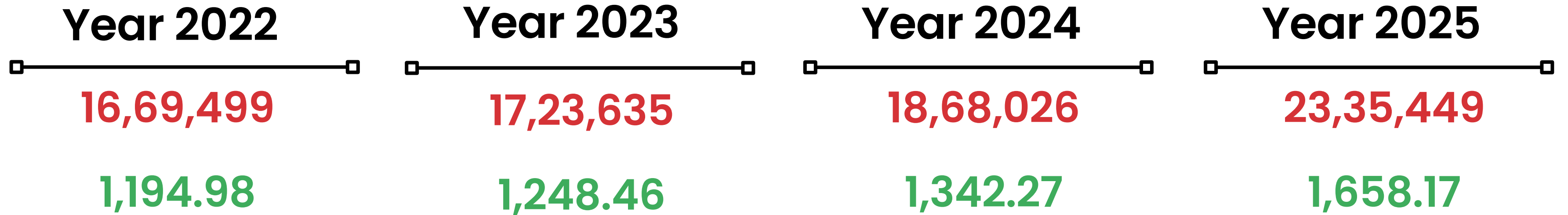


Scope 2

Indirect GHG Emissions



Purchased Electricity



**Consumption
in kWh**



**GHG Emission
TCO₂Eq**

Scope 3

Other Indirect GHG Emissions



Categories of Scope 3

1 Employee Commute

2 Purchased Goods

3 Transmission &
Distribution Loss

4 Upstream Activities

5 Downstream Activities

6 Waste Disposal

7 Water Supply

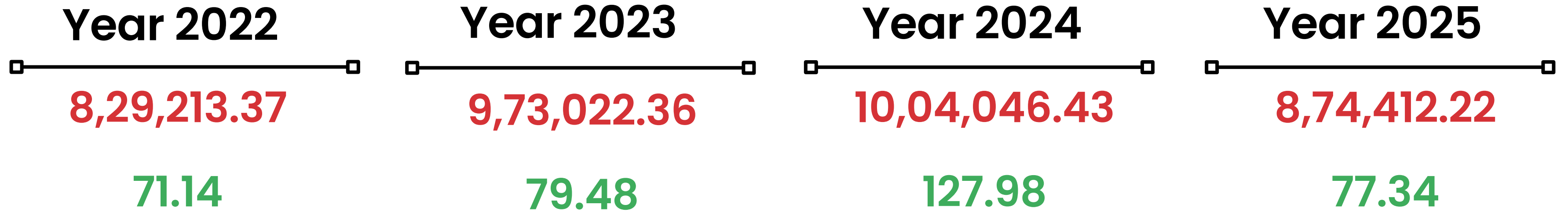
8 Business Travel

9 Hotel stay



Employee Commute

Commute by Car, Motorbike, Taxi, Bus & Rail

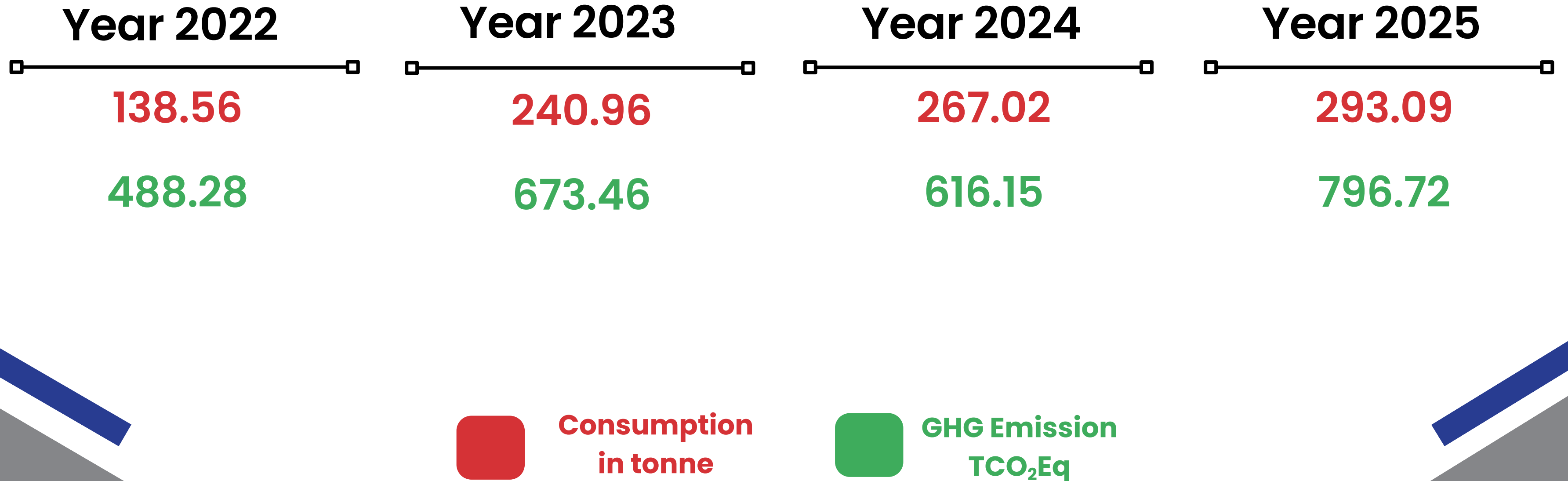


 **km travelled**

 **GHG Emission
TCO₂Eq**

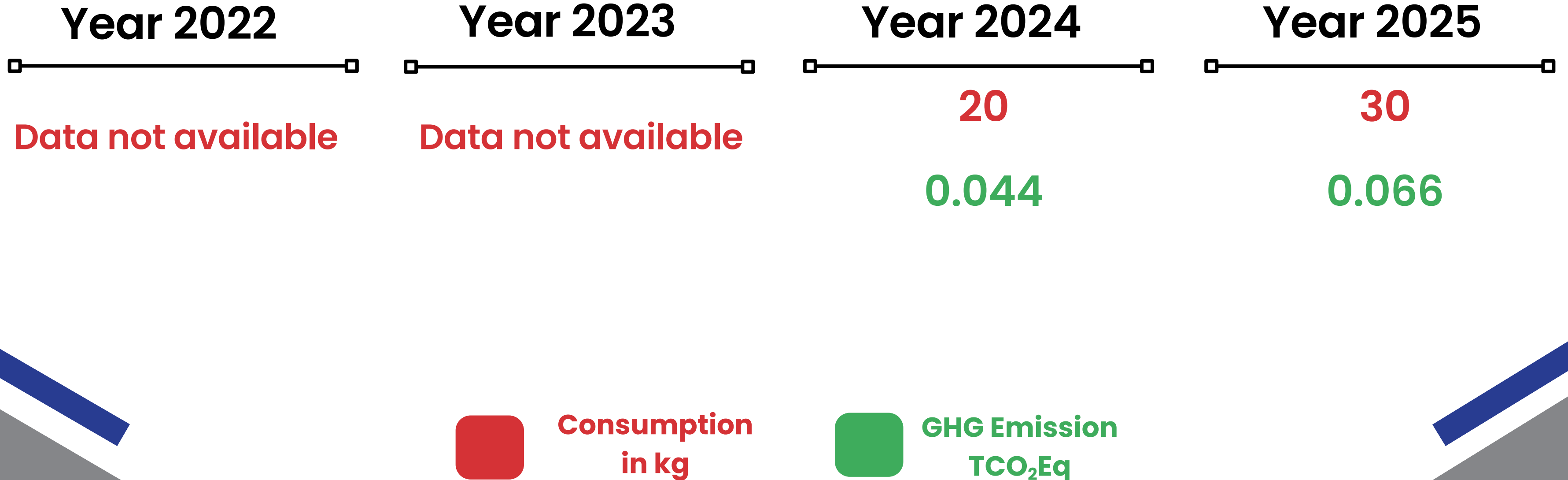
Purchased Goods

Purchased Electrical items, Metal, Glass, Plastic & Paper



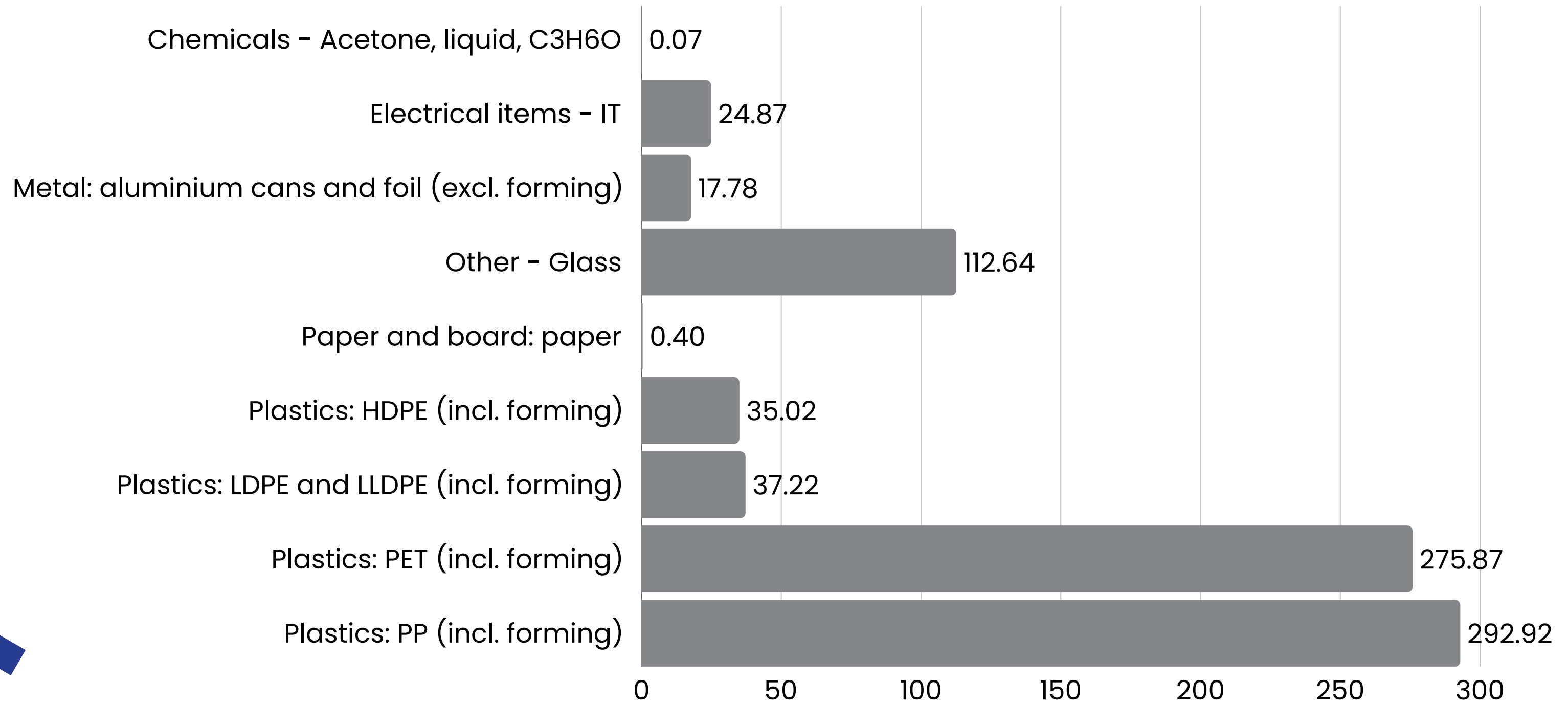
Purchased Goods

Purchased Chemicals – Acetone liquid

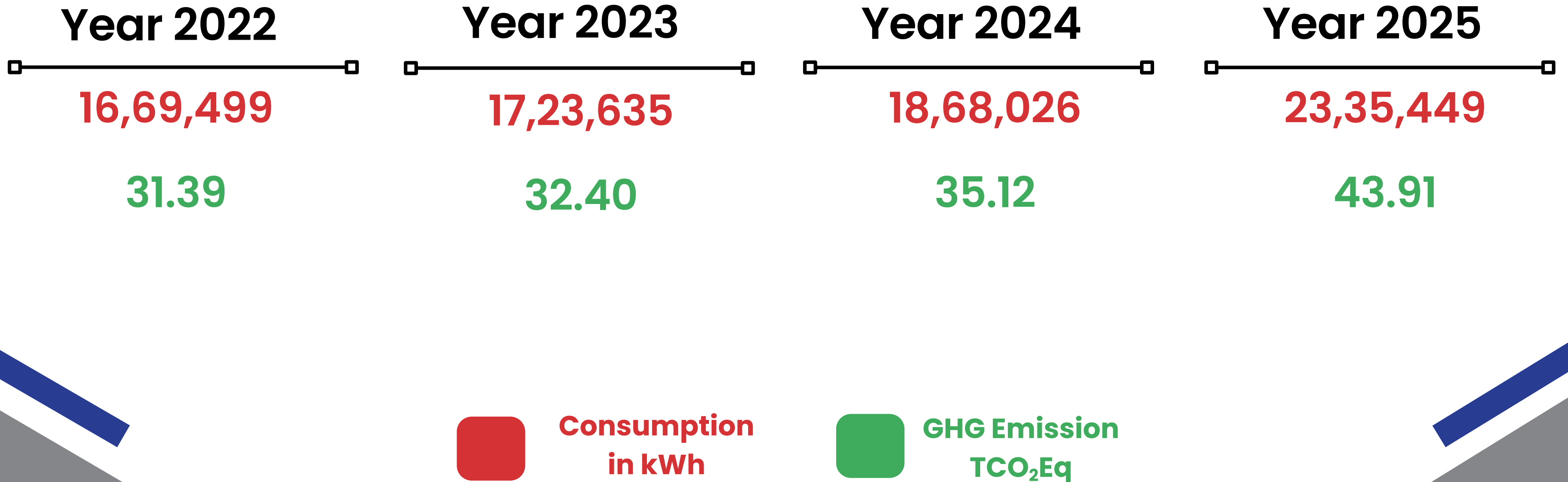


Purchased Goods

GHG Emission TCO₂Eq for Year 2025

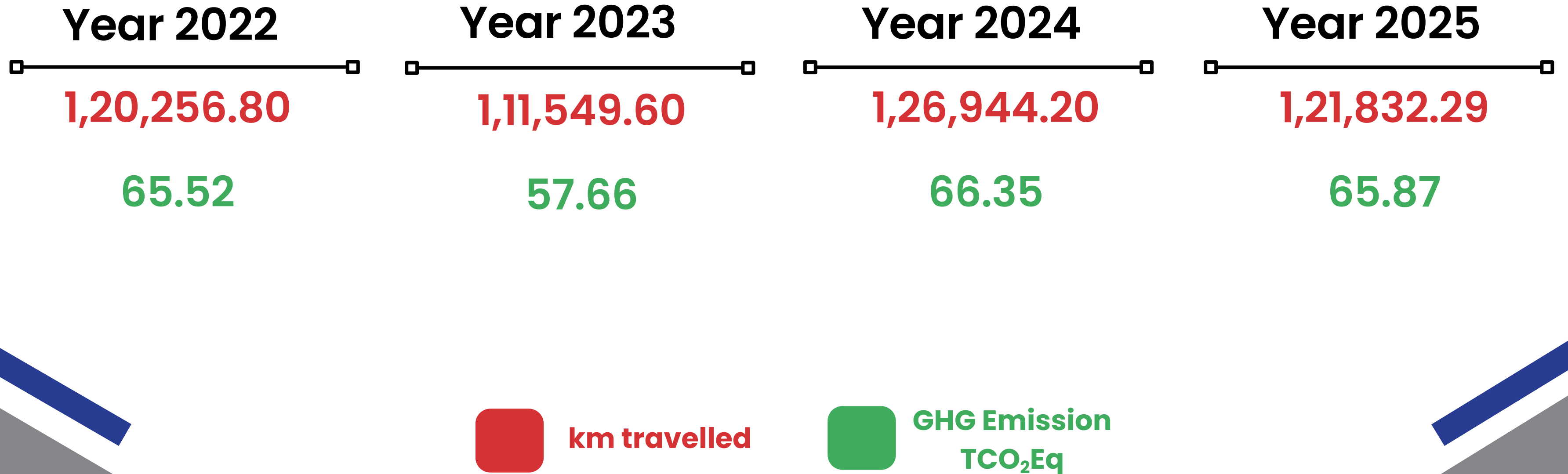


Transmission & Distribution Loss



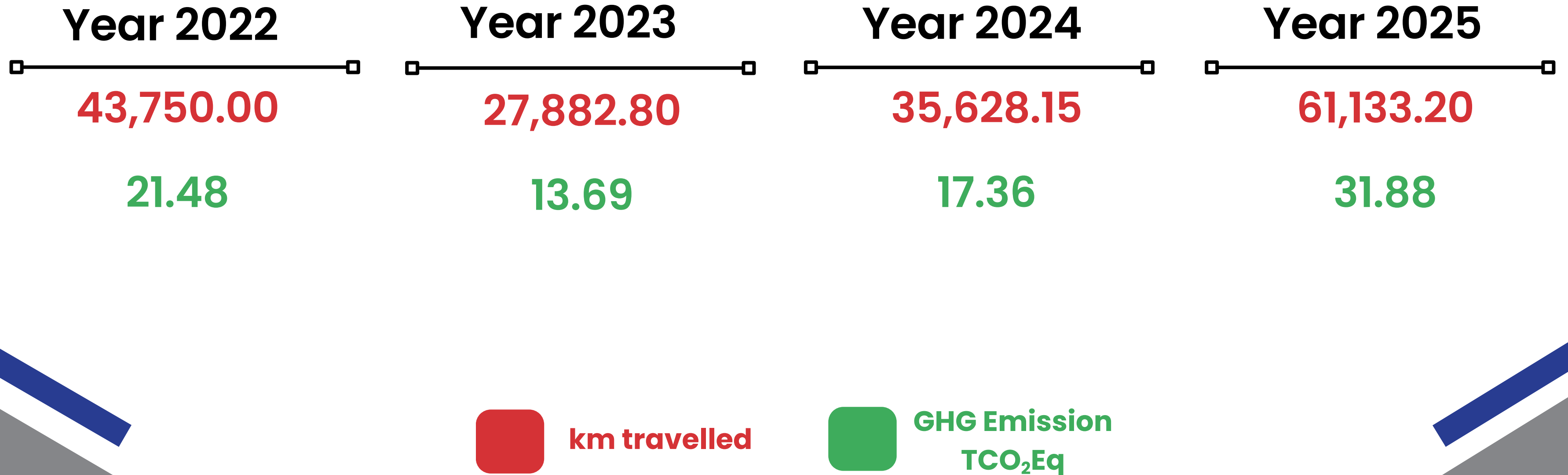
Upstream Activities

Transportation of Raw Material by Vans & HGVs



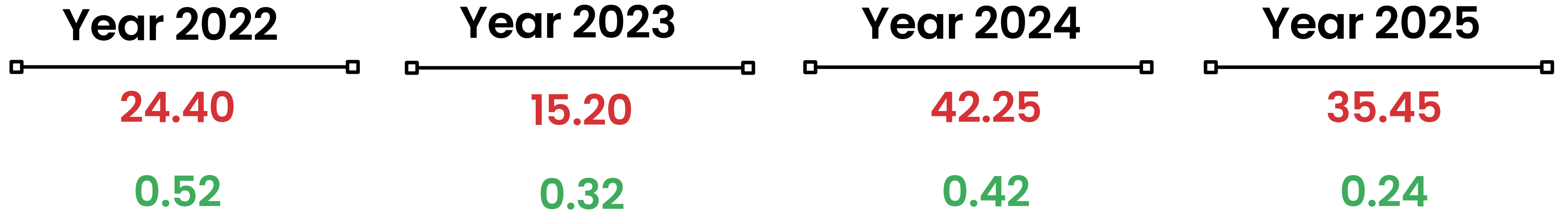
Downstream Activities

Transportation of Finishing Goods by HGVs



Waste Disposal

Generation of Commercial and industrial & Plastics waste



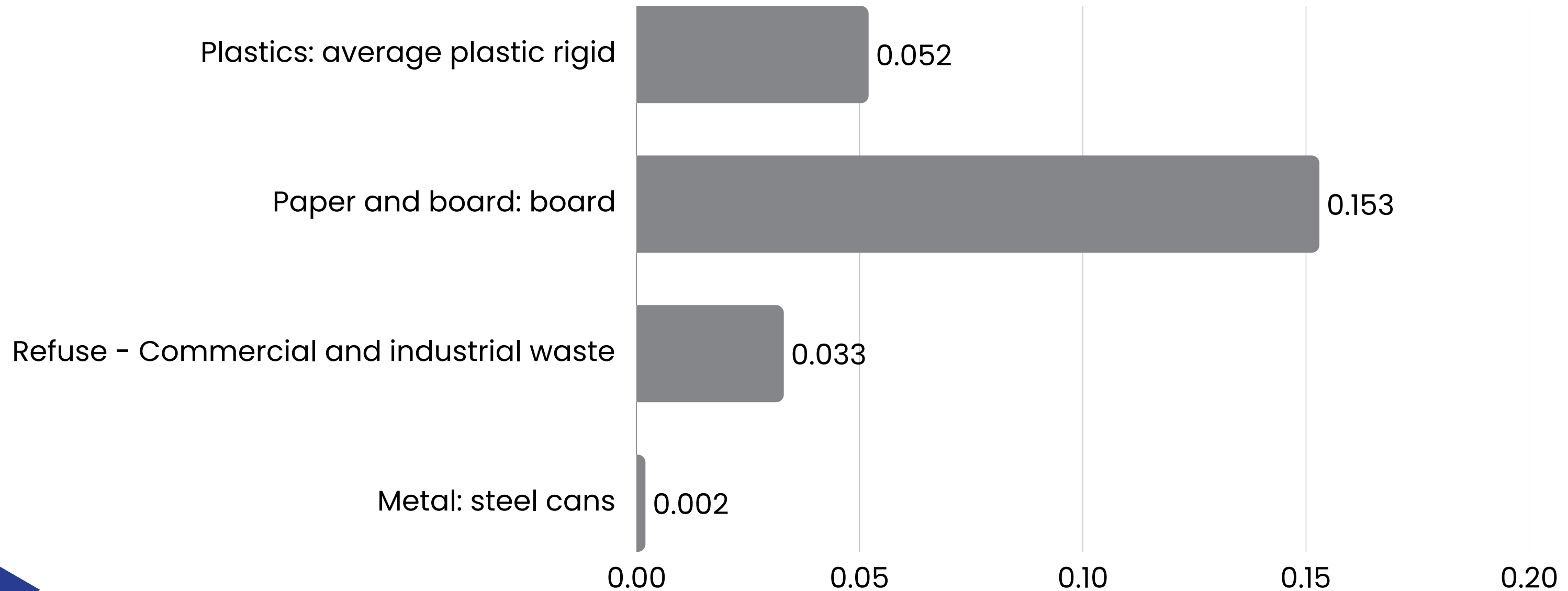
**Generation in
tonne**



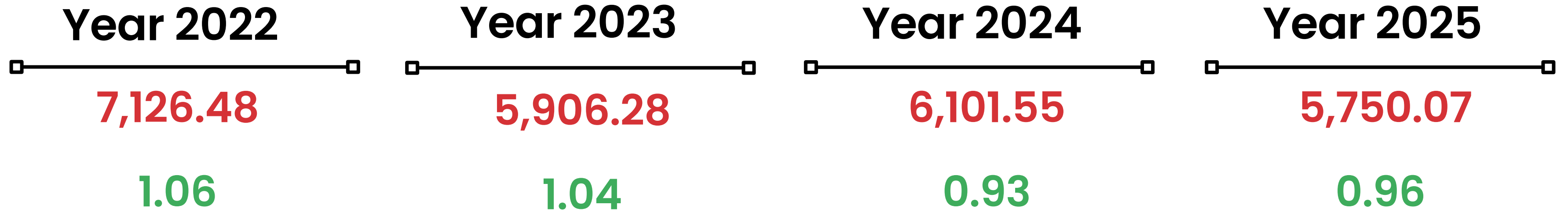
**GHG Emission
TCO₂Eq**

Waste Disposal

GHG Emission TCO₂Eq for Year 2025



Water Supply

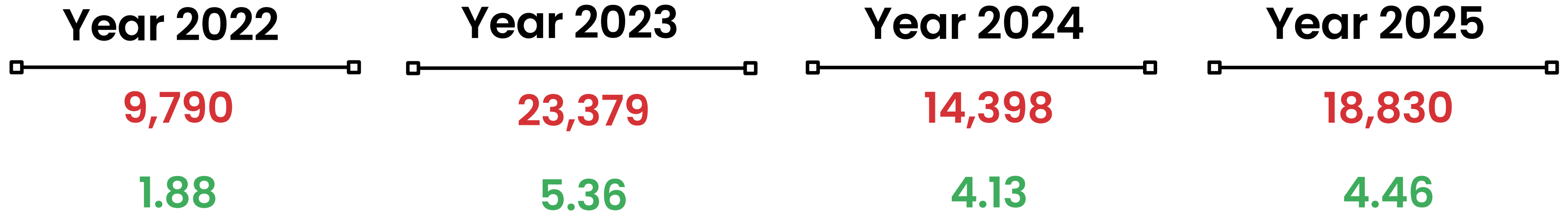


 **Total Cubic meters**

 **GHG Emission TCO₂Eq**

Business Travel

Air travel by flights



km travelled



GHG Emission
TCO₂Eq

Business Travel

Land travel by Car, Rail & Bus

Year 2022

No business travel was undertaken during the COVID-19 pandemic period.

Year 2023

981

0.16

Year 2024

668

0.11

Year 2025

442

0.07

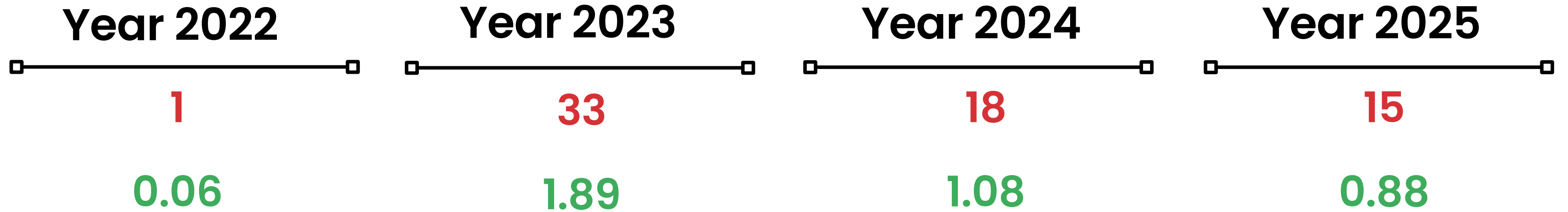


km travelled



GHG Emission
TCO₂Eq

Hotel stay

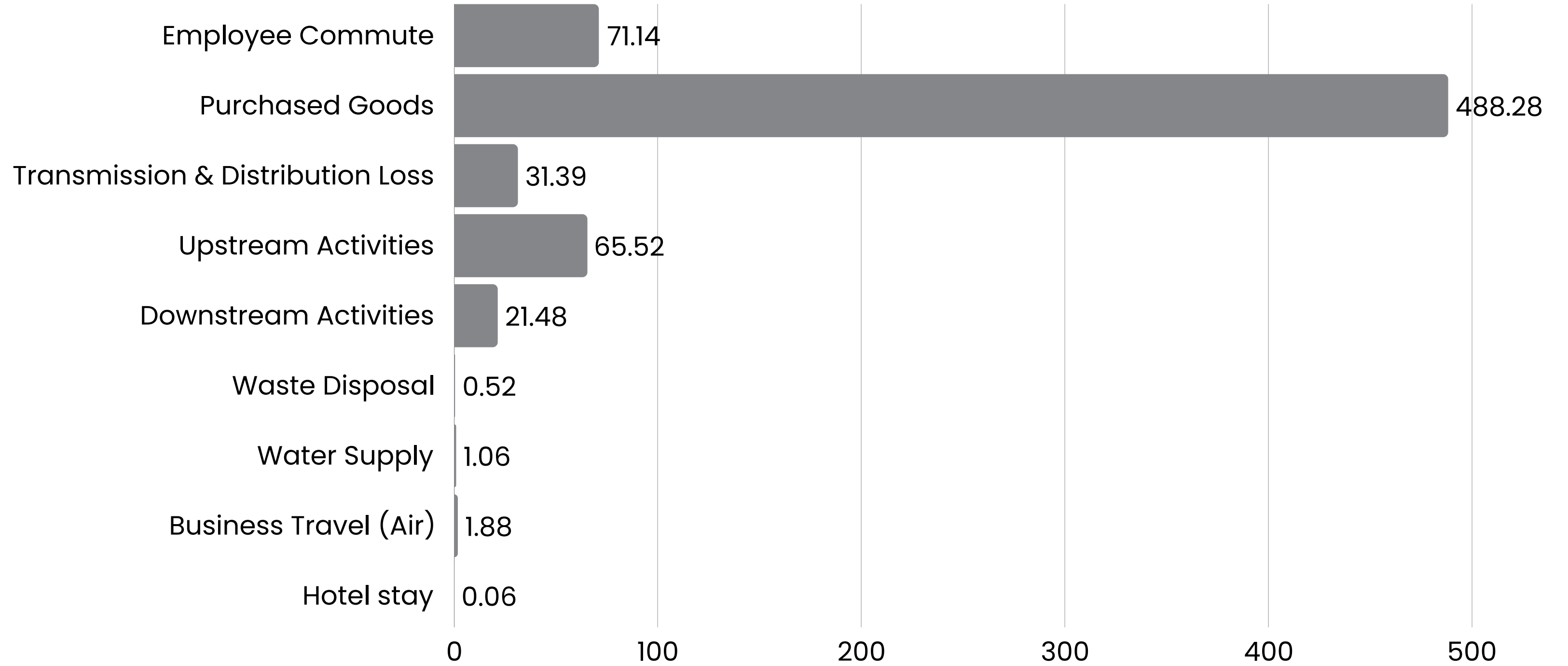


 **Total number of nights stayed**

 **GHG Emission TCO₂Eq**

Group level Summary of Scope 3

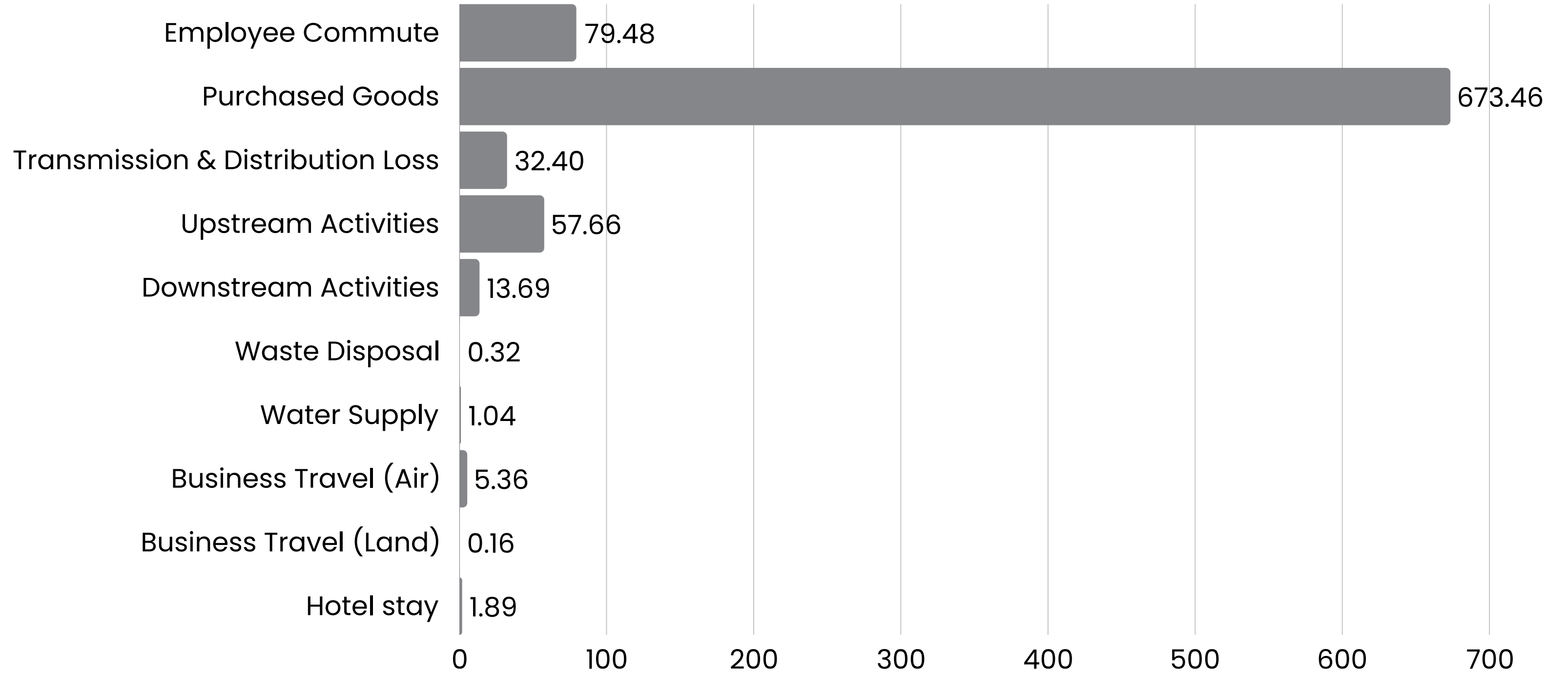
Reporting Period
Year 2022



Total GHG Emission 681.33 TCO₂Eq

Group level Summary of Scope 3

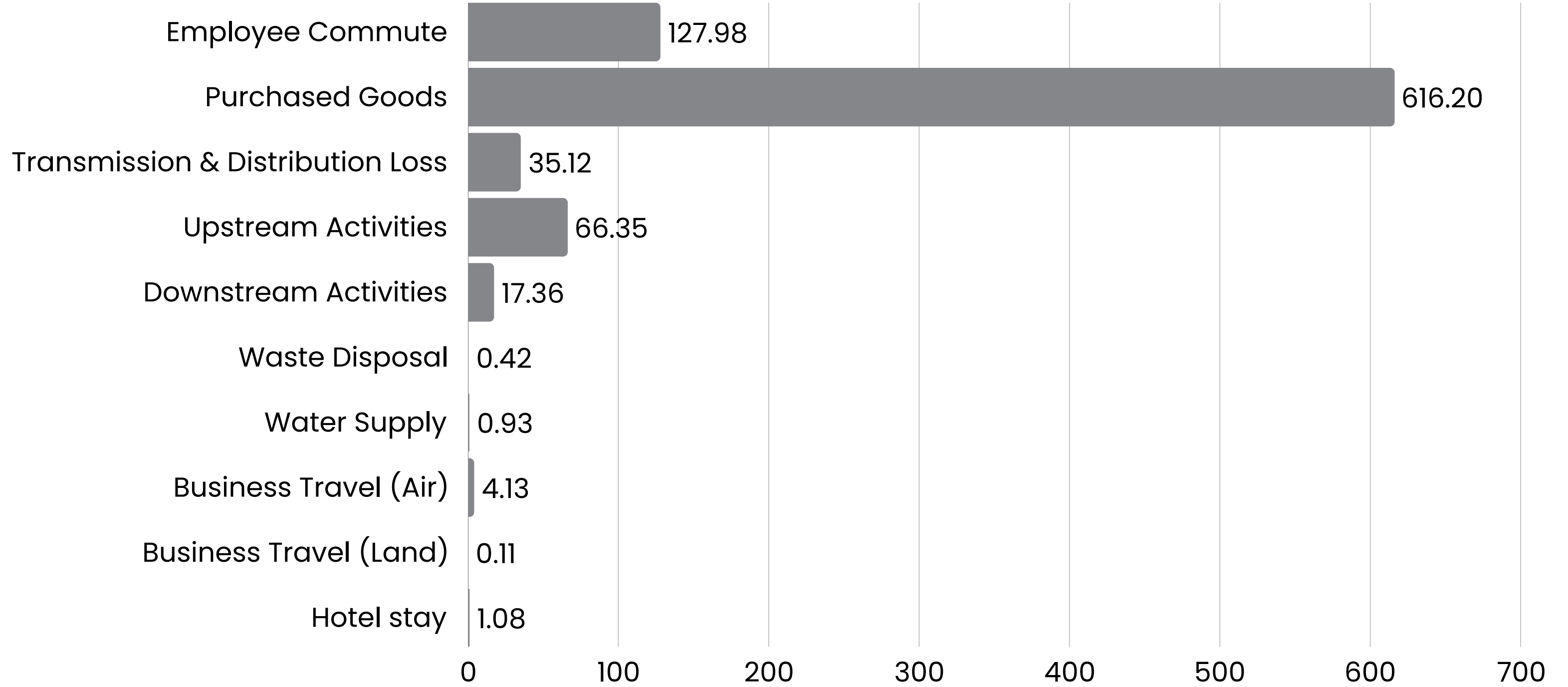
Reporting Period
Year 2023



Total GHG Emission 865.46 TCO₂Eq

Group level Summary of Scope 3

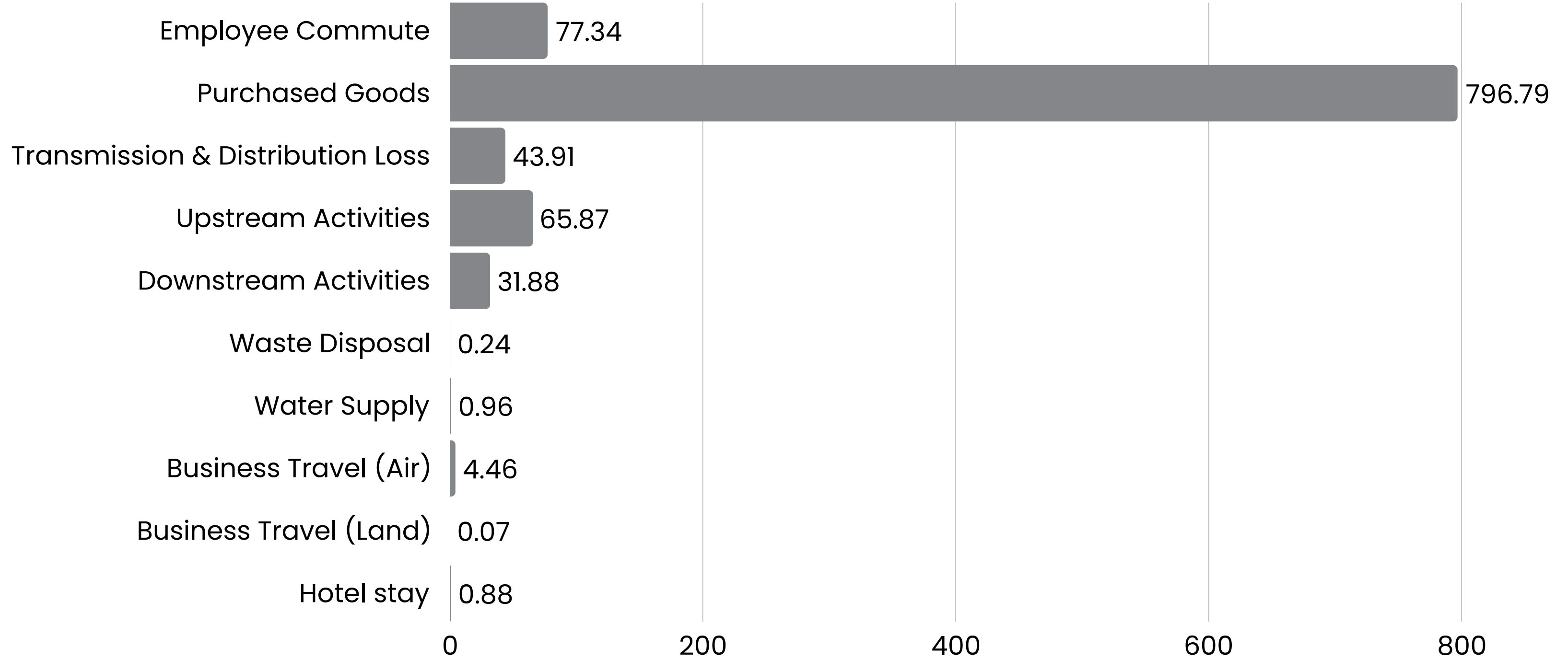
Reporting Period
Year 2024



Total GHG Emission 869.68 TCO₂Eq

Group level Summary of Scope 3

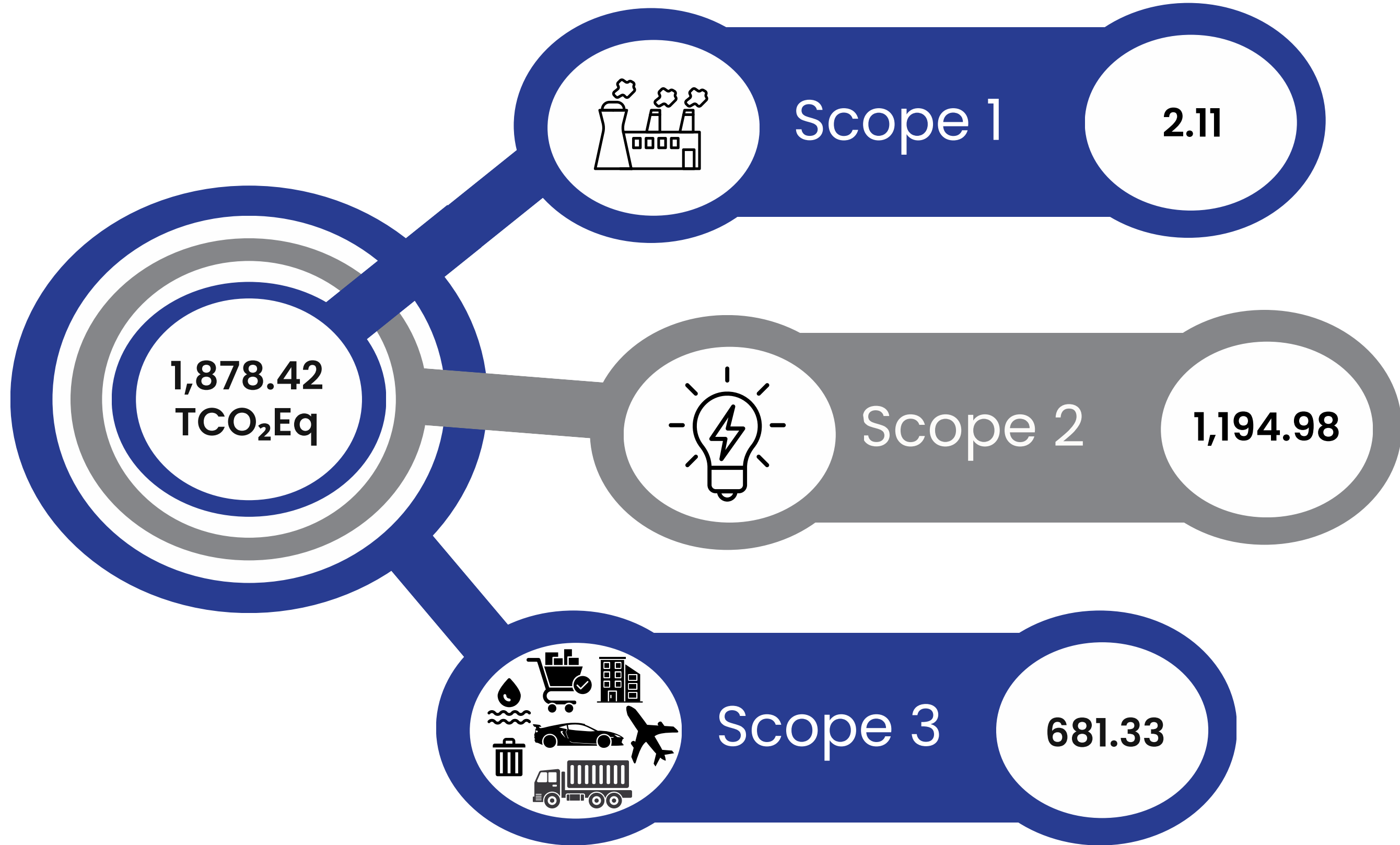
Reporting Period
Year 2025



Total GHG Emission 1,022.40 TCO₂Eq

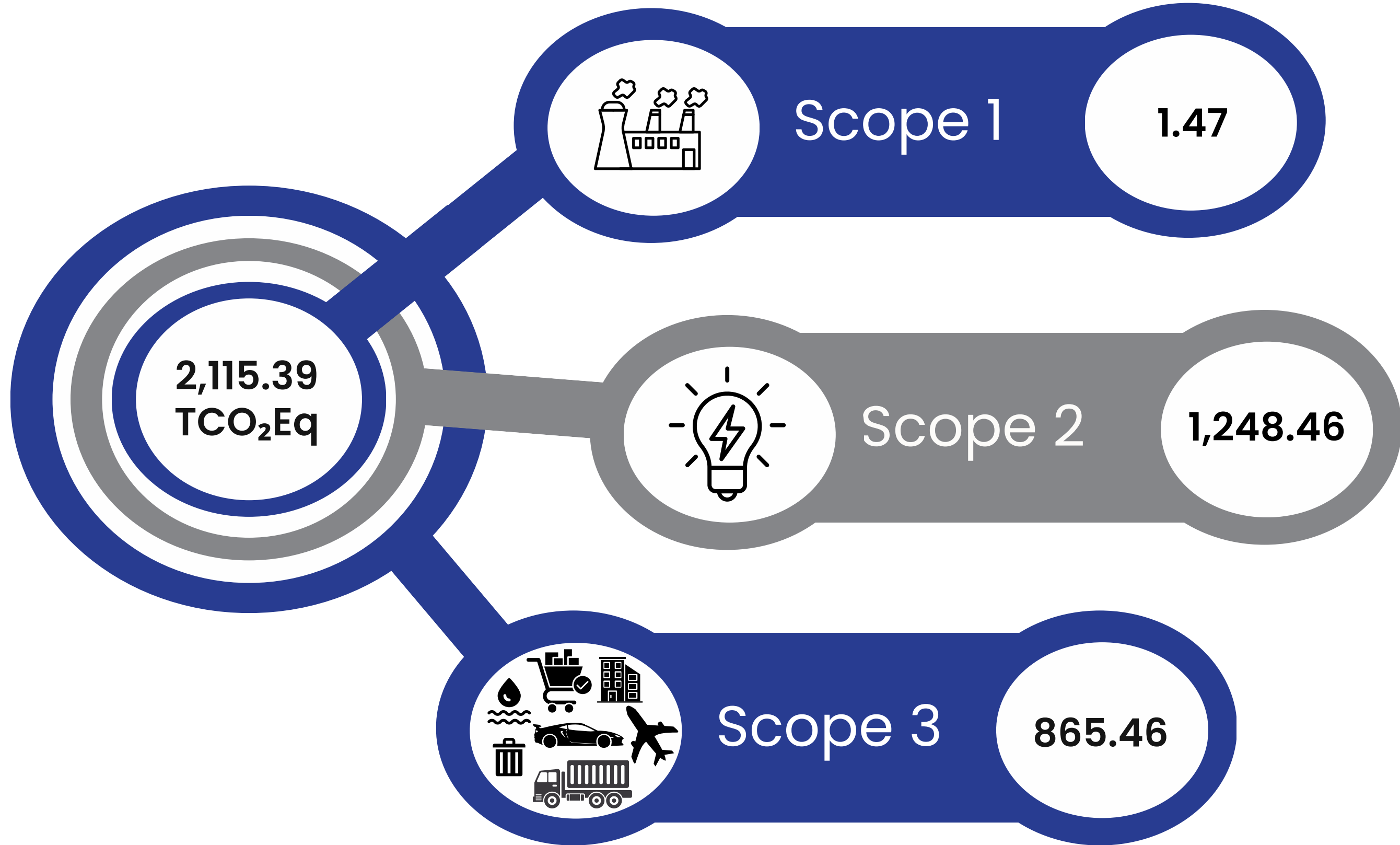
Total Group level GHG Emission TCO₂Eq

Reporting Period
Year 2022



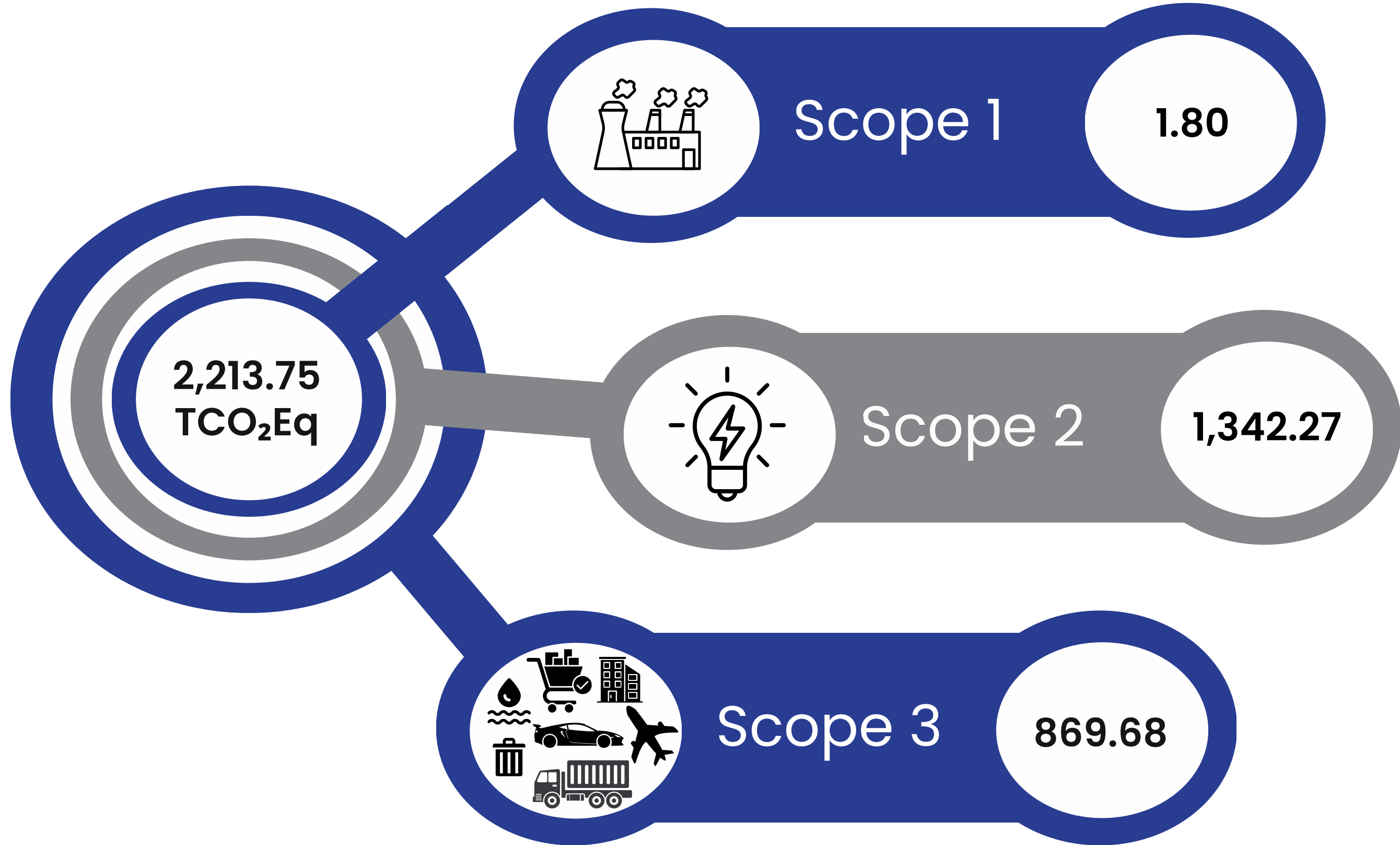
Total Group level GHG Emission TCO₂Eq

Reporting Period
Year 2023



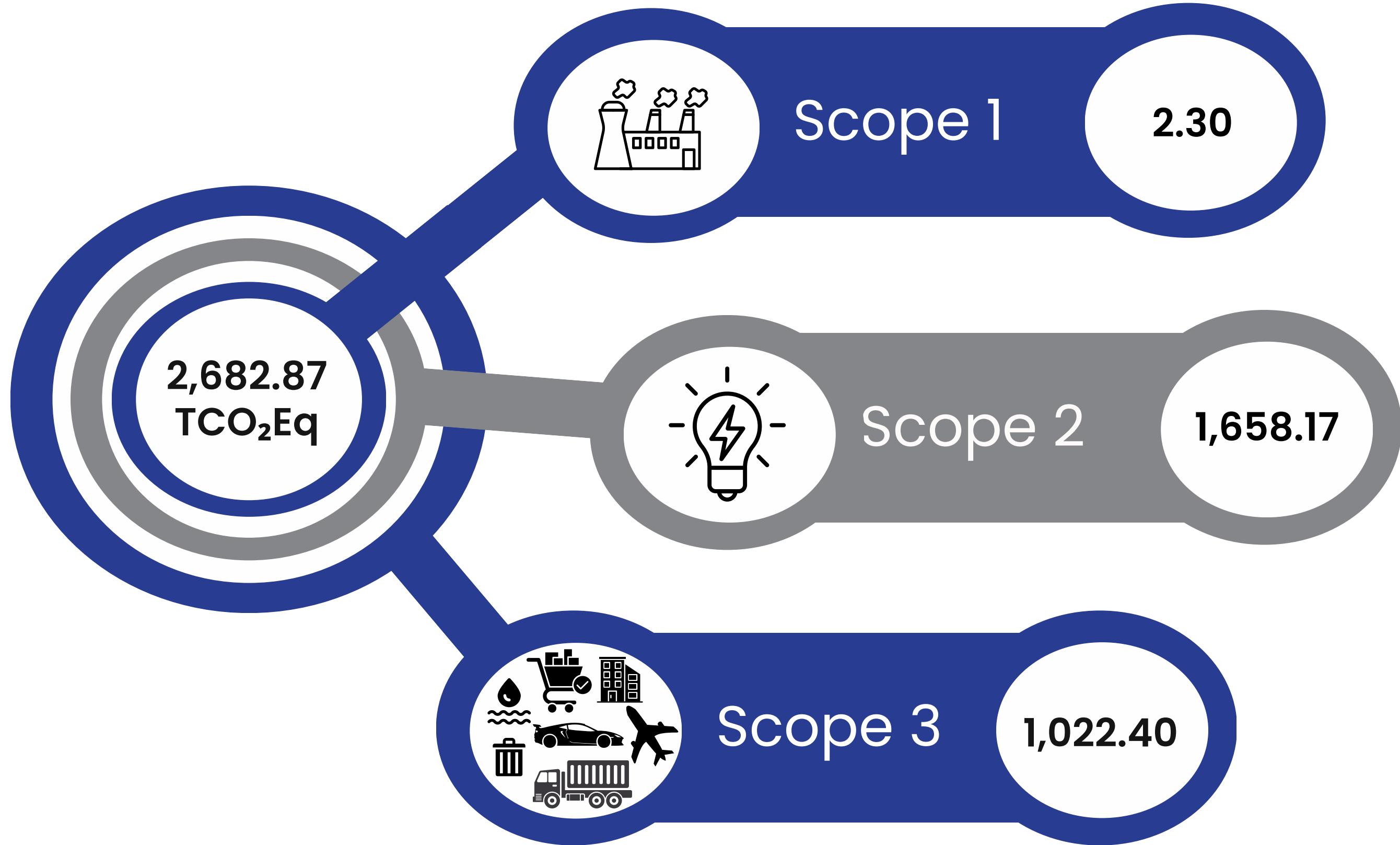
Total Group level GHG Emission TCO₂Eq

Reporting Period
Year 2024



Total Group level GHG Emission TCO₂Eq

Reporting Period
Year 2025





Growlity, Inc. USA

+ 1 (718) 690 9291

www.growlity.com

contact@growlity.com

575 FIFTH AVENUE, NEW YORK,
NY 10017, USA

Growlity Private Limited, India

+ 91 960 131 0999

www.growlity.com

contact@growlity.com

316, RAJHANS MONTESSA, AIRPORT ROAD,
SURAT – 395007. INDIA

This publication is prepared by Growlity, an incorporation registered at USA having branch office in India to provide various coaching and consulting services worldwide. The content of this publication is designed to provide accurate information regarding the subject matter covered for consulting services of Growlity. All rights reserved exclusively with Growlity. No part of this publication may be reproduced, stored in or introduced into retrieval system, or transmitted, in any form, or by any means (electronic, mechanical, photocopying, recording or otherwise) without prior written permission of Growlity. Any person who does any unauthorized act in relation to this Approach may be liable to criminal prosecution and civil claims for damages.